

# Now you can get the world's most advanced locking technology in a cast fifth wheel

Introducing the Fontaine 7000 Series Cast Fifth Wheel



# You already know the producer... Now it's time to meet the cast

## Meet the newest member of the Fontaine TechLock® System.

You know Fontaine® as the manufacturer of the #1 selling pressed steel fifth wheel in the world. In fact, our legendary 6000 Series No-Slack® II

is the preferred choice for on-highway applications from coast-to-coast.

At the same time, we recognize there is a market segment that prefers cast rather than pressed steel products. We are pleased to respond with an innovative design promising to delight our customers: The new Fontaine® 7000 Series.

The 7000 Series Fifth Wheel offers all the benefits of our 6000 Series, but in a cast design rather than pressed.

## Which is better, Fontaine's pressed or cast fifth wheel?

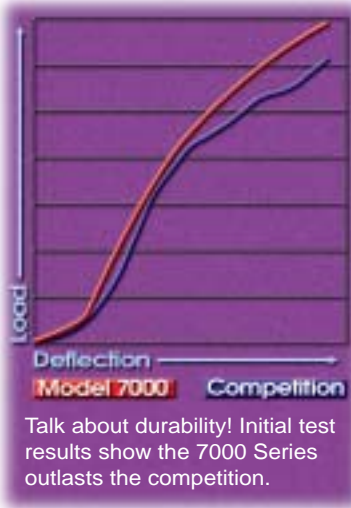
Glad you asked.

They both are.

Better than the competition that is.

Why?

Because both offer the patented No-Slack® II locking mechanism which eliminates fifth wheel slack automatically to save time, cut labor cost and reduce wear.



Both feature a computer designed surface contact area that gives you greater road stability and durability.

Both feature a patented safety trigger that virtually eliminates false

trailer couplings to prevent dangerous high hitching.

Both feature a patented positive secondary safety lock for greater safety and security that can only be disengaged by pulling the release handle.

And speaking of the release handle, both feature a patented design that requires significantly less pull force than any other fifth wheel on the market. Drivers really appreciate how easy it is to engage and disengage Fontaine® fifth wheels.

So when you ask, "Which is better?" you see why we have to answer, "They both are". Fontaine® fifth wheel technology is simply better by design.

## Why did you develop the cast product if it's the same as the pressed?

We didn't say they were the same, just that they both

offer the same performance advantages.

We are offering the 7000 Series simply because some customers, for whatever reason, have always specified cast products.

Now these customers will no longer have to settle for less than the best fifth wheel locking technology.

Adding the new 7000 Series cast fifth wheel to the Fontaine TechLock® System gives our customers one more reason to say, "You just can't beat the System."

## 7000 Series Applications

- Van Trailers
- Reefers
- Standard Doubles
  - 40' Doubles
  - 50' Doubles
- Flat Beds
- Low Boys
- Tankers
- Converter Dollys
  - Logging
  - Chip Hauling
  - Bottom Dump
  - End Dump
- Frameless Dump
- and many more

The above list serves as a general guide for 7000 Series applications. Consult your Fontaine fifth wheel expert regarding your specific application.

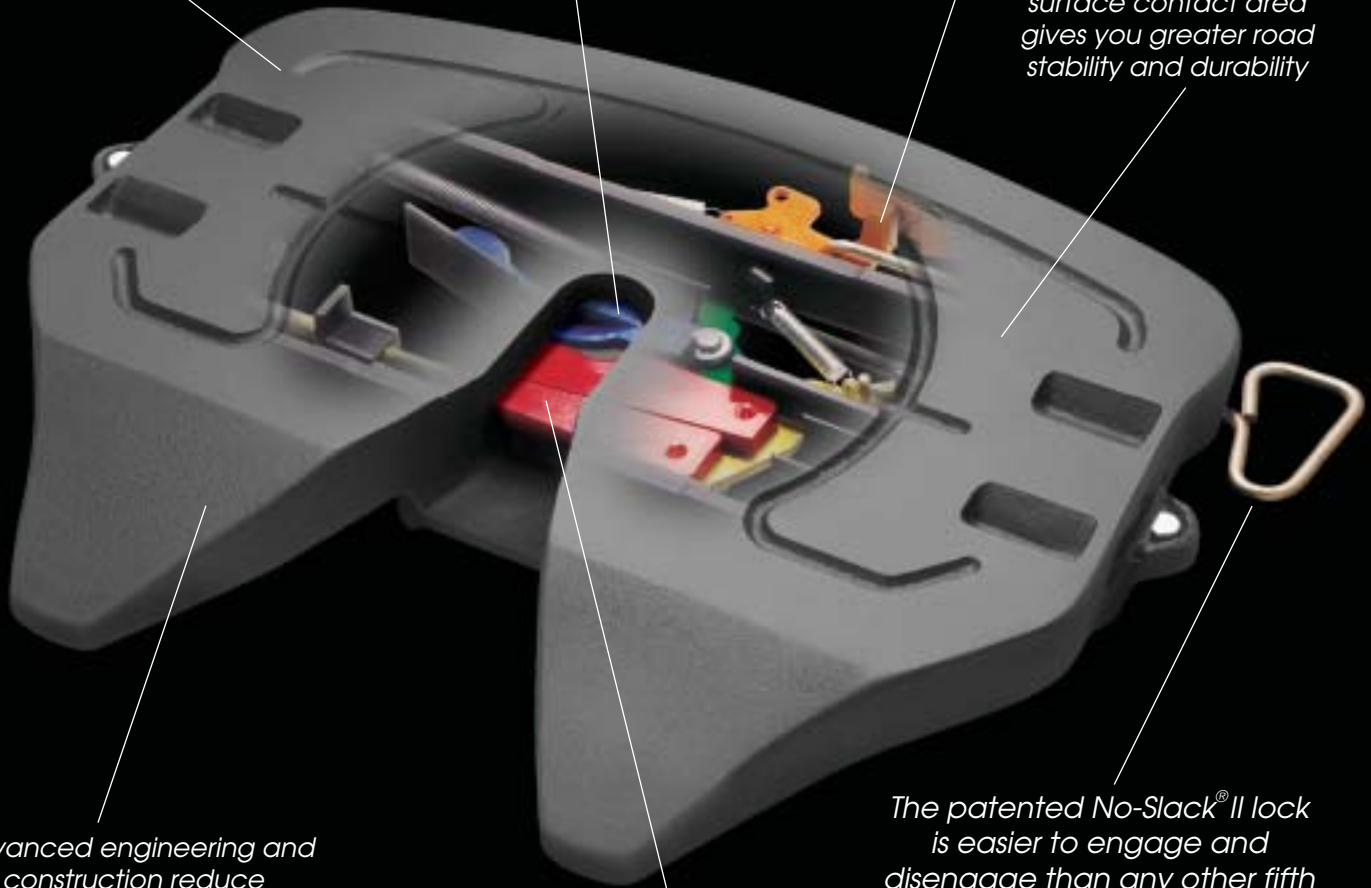
# Simply Better by Design

The patented safety trigger eliminates the possibility of false trailer couplings to prevent dangerous high-hitching

For added safety the patented positive secondary lock can only be released by pulling the handle

State-of-the-art design, created by finite element analysis, solid modeling and extensive testing, is strategically reinforced for greater durability

The computer designed surface contact area gives you greater road stability and durability



Advanced engineering and construction reduce maintenance to give you the lowest cost per mile

The patented No-Slack® II lock is easier to engage and disengage than any other fifth wheel on the market

Patented No-Slack® II jaw and wedge locking system eliminates slack automatically to save time, cut labor cost and reduce wear





# You just can't beat The System!

The Fontaine® TechLock® System

## No-Slack® II (7000 Series)

55,000 lbs. Vertical Load  
150,000 lbs. Drawbar Pull



C7000

## No-Slack® II (6000 Series)

50,000 lbs. Vertical Load  
150,000 lbs. Drawbar Pull



## No-Slack® (H5092 Series)

62,500 lbs. Vertical Load  
150,000 lbs. Drawbar Pull



## No-Slack® (X5092 Series)

75,000 lbs. Vertical Load  
200,000 lbs. Drawbar Pull



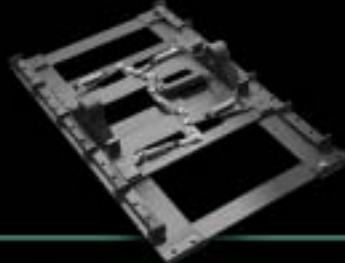
## Air Wedge Slide Bracket

**Model 7ATB** (7000 Top plate)  
**Model 6ATB** (6000 Top plate)  
**Model HATB** (H5092 Top plate)



## Xtra™ Heavy Duty Air Wedge Slide

**Model XAWX** (X5092 Top plate)



## Manual Wedge Slide Bracket

**Model 7MTB** (7000 Top plate)  
**Model 6MTB** (6000 Top plate)  
**Model HMTB** (H5092 Top plate)



## Adjustable Plate Mount

**Model 7PMA** (7000 Top plate)  
**Model 6PMA** (6000 Top plate)  
**Model HPMA** (H5092 Top plate)



## Stationary Angle Mount

**Model 7A36** (7000 Top plate)  
**Model 6A36** (6000 Top plate)  
**Model HA36** (H5092 Top plate)



## Stationary Frame Mount

**Model 7FMA** (7000 Top plate)  
**Model 6FMA** (6000 Top plate)  
**Model HFMA** (H5092 Top plate)



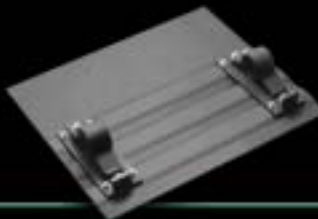
## Bracket Stationary Mount

**Model 7BSM** (7000 Top plate)  
**Model 6BSM** (6000 Top plate)  
**Model HBSM** (H5092 Top plate)



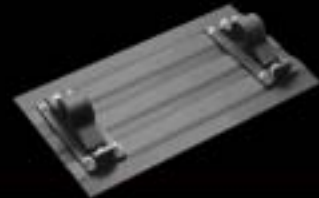
## Stationary Long Plate Mount

**Model 7PLA** (7000 Top plate)  
**Model 6PLA** (6000 Top plate)



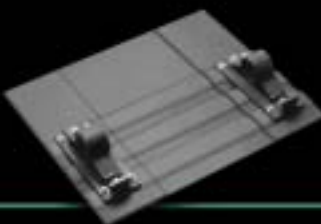
## Stationary Short Plate Mount

**Model 7PSA** (7000 Top plate)  
**Model 6PSA** (6000 Top plate)



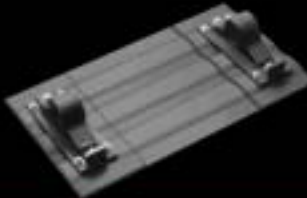
## Reinforced Stationary Long Plate

**Model HPLA** (H5092 Top plate)  
**Model XPLA** (X5092 Top plate)



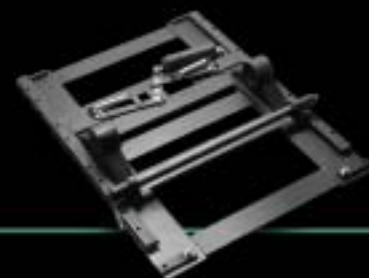
## Reinforced Stationary Short Plate

**Model HPSA** (H5092 Top plate)  
**Model XPSA** (X5092 Top plate)



## Heavy Duty Blocked Air/Manual Slide

**Model BLHAWB** (H5092 Top plate)



Fontaine International

World Wide Headquarters • 5000 Grantswood Road • Suite 200 • Irondale, Alabama 35210 • 800-874-9780 • Fax 205-421-4400

A Marmon Highway Technologies™ Company

[www.fifthwheel.com](http://www.fifthwheel.com)

©2005 FONTAINE INTERNATIONAL • LT-067 3M March 2005