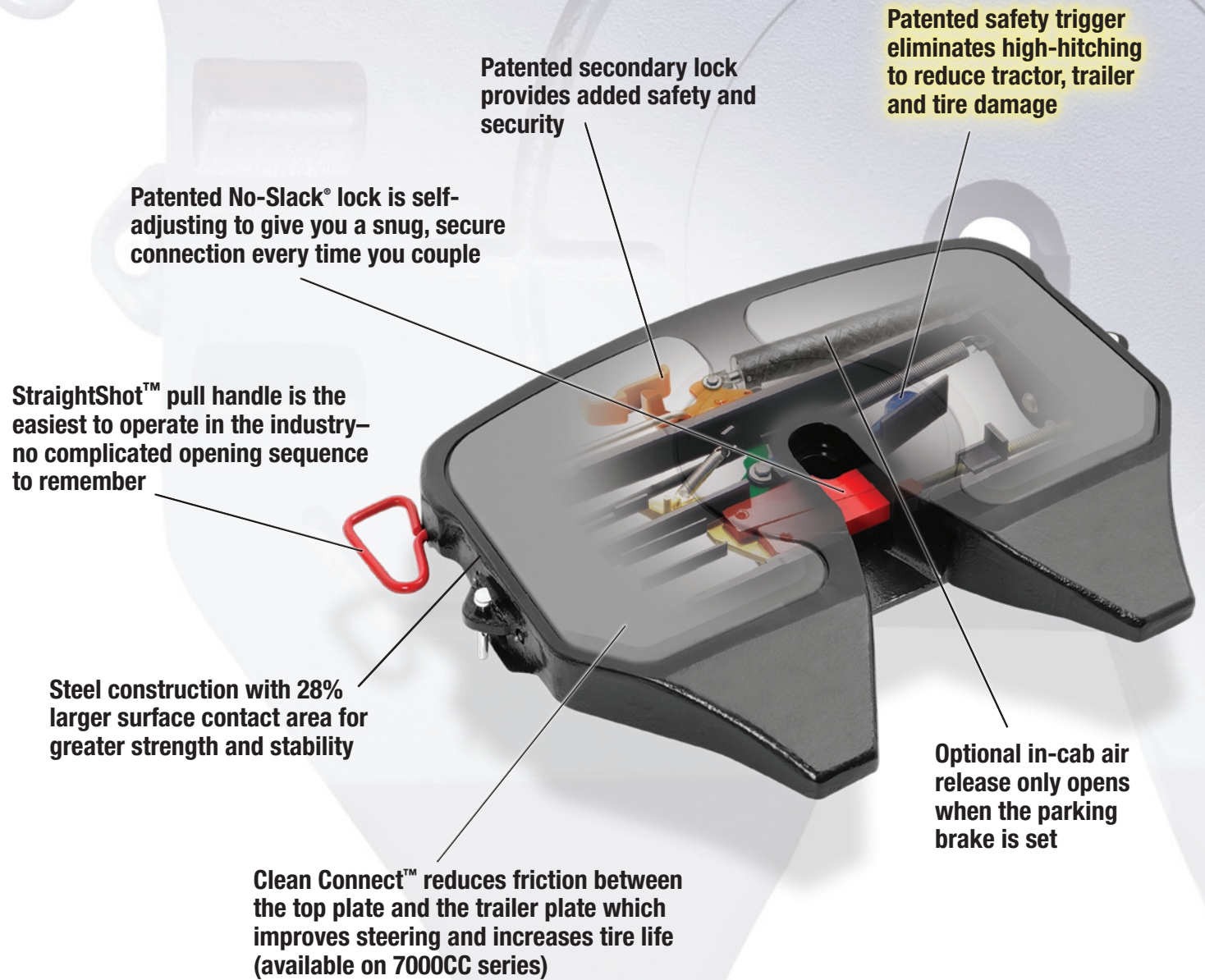


Fontaine **No-Slack**[®]

The world's only self-adjusting fifth wheel lock



Patented secondary lock provides added safety and security

Patented safety trigger eliminates high-hitching to reduce tractor, trailer and tire damage

Patented No-Slack[®] lock is self-adjusting to give you a snug, secure connection every time you couple

StraightShot[™] pull handle is the easiest to operate in the industry—no complicated opening sequence to remember

Steel construction with 28% larger surface contact area for greater strength and stability

Optional in-cab air release only opens when the parking brake is set

Clean Connect[™] reduces friction between the top plate and the trailer plate which improves steering and increases tire life (available on 7000CC series)



FONTAINE
FIFTH WHEEL[®]

CONNECT YOUR BUSINESS WITH FONTAINE[®]

Fontaine No-Slack®

The world's only self-adjusting fifth wheel lock

- **Patented No-Slack® design automatically resets the lock to accommodate wear**

- Switch from trailer to trailer hassle-free
- Reduces shock inputs into the frame when braking and accelerating
- Improves driver comfort
- Reduces driver complaints
- Extends service life of other components

- **Patented safety trigger eliminates high-hitching**

- Reduces driver frustration
- Reduces tractor, trailer and tire damage
- Saves expensive wrecker and clean up bills

- **Easy coupling force—only 30 lbs!**

- Less wear and tear on the kingpin
- Extends service life of drivetrain components

- **StraightShot™ pull handle is the easiest to operate in the industry**

- Opens easily with a simple, straight pull of the handle
- No complicated opening sequence to remember
- Reduces worker compensation exposure

- **Rugged steel construction for added strength and durability**

- 28% larger surface area for greater stability

- **Performance options**

- In-cab air release: The fifth wheel will not open unless the parking brake is set
- Clean Connect™: Improves steering, increases tire life, reduces maintenance and helps protect the environment
- **NEW** TechLock sensor fifth wheel: Electronic sensors let the driver know that the kingpin is correctly positioned inside the lock and the fifth wheel is closed
- **NEW** SmartLock™ visual lock indicator: Gives the driver improved visual indication that the fifth wheel is properly closed



6000 Series
Stamped Steel
No-Slack®



7000 Series
Cast Steel
No-Slack®



7000CC Series
Clean Connect™
Cast Steel
No-Slack®



CONNECT YOUR BUSINESS WITH FONTAINE®

Fontaine Fifth Wheel • 7574 Commerce Circle • Trussville, AL 35173 USA • 800.874.9780 • Fax 205.655.9982

www.fifthwheel.com