



FONTAINE
FIFTH WHEEL

The No-Slack® Fifth Wheel Technology Leader

FONTAINE

Navistar Order Codes for Fontaine Fifth Wheels



NT



7000



A **NAVISTAR** COMPANY



6000

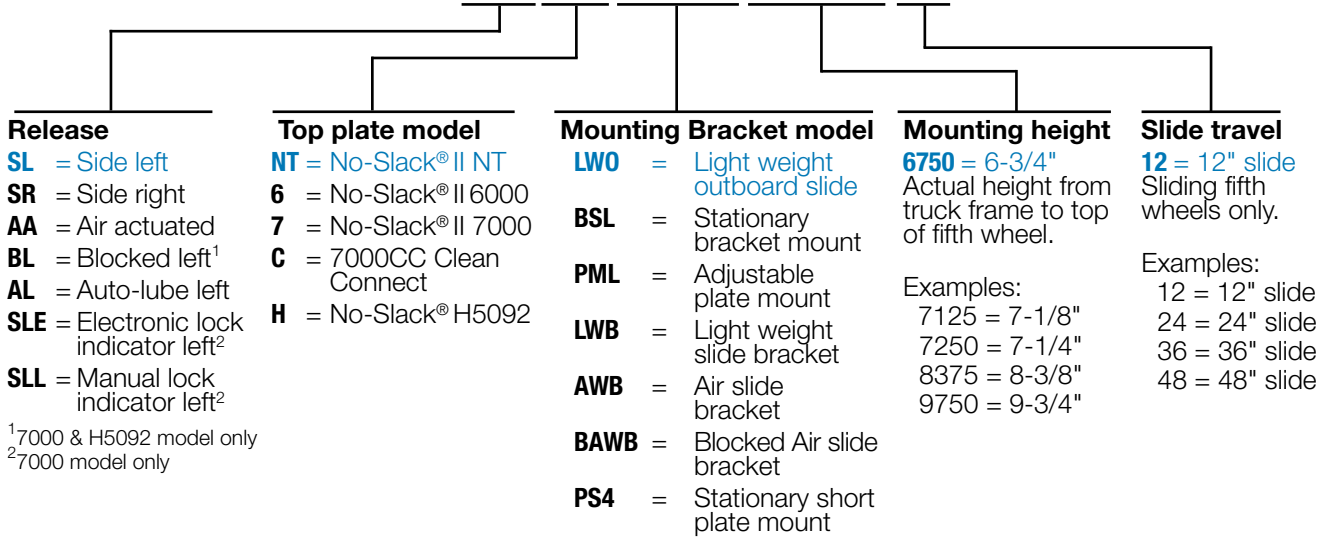


7000CC

This guide explains the nomenclature for Fontaine Fifth Wheel complete assembly part numbers

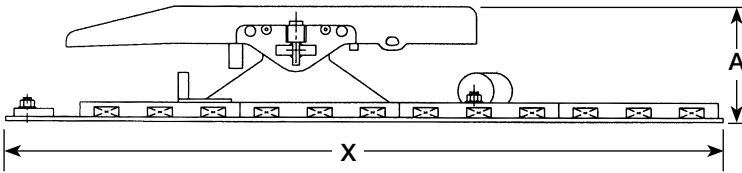
See example part number at right:

SLNTLW0675012



Measurements & Selection Guide

How do I measure a fifth wheel?



The installed height of all Fontaine models is measured from the top of the truck frame to the top of the fifth wheel. For standard models dimension "A" is a part of the model number. For example, if dimension "A" in this diagram is 7.75 inches, it would appear in the model number as 7750 (Example: SL7AWB**7750**24).

Selection Guide

Scan code or go to:
www.fifthwheel.com
Choose "Support" then choose
"Choosing the right fifth wheel"



For weight savings top plates, mounts and assemblies, look for this symbol.

Standard Duty Air Slide Assemblies

Light Weight Outboard Slide No-Slack® II NT LWO Slide

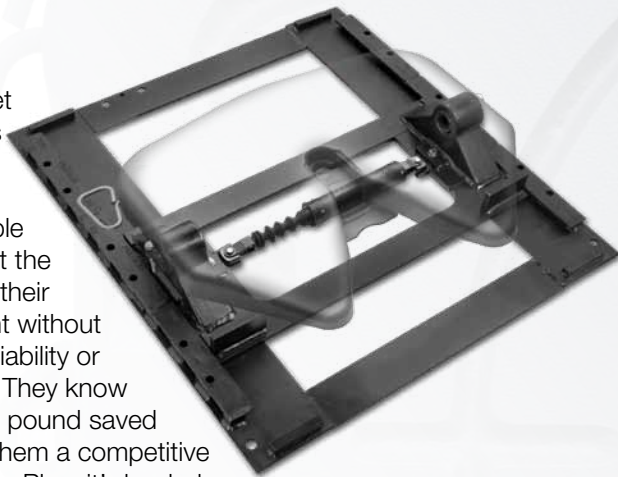


No-Slack® II NT LWO
50,000 pounds vertical load

Features

Smart fleet managers look for every conceivable way to cut the weight of their equipment without cutting reliability or durability. They know that every pound saved can give them a competitive advantage. Plus, it's loaded with important features that make it even more attractive to our customers.

- No-Slack® design
- Additional weight savings possible with shorter angles (10-15 lbs)
- As light as aluminum fifth wheel slider systems – with the durability and cost-effectiveness of steel construction
- 4" slide increments give you slide versatility for improved payload distribution
- Compact design with central mounted air cylinder
- Booted air cylinder provides protection to shaft
- Improved fuel economy and low up-charge make the LWO very attractive to weight-sensitive, cost-conscious fleets



Navistar Codes	Release Type	NT LWO Part Number	Fifth Wheel Height	Slide Length	Weight
*	Air actuated	AANTLW0675012	6-3/4"	12"	389 lbs
0010HYH	Drivers side	SLNTLW0675012		12"	384 lbs
*	Passenger side	SRNTLW0675012		12"	384 lbs
0010HYJ	Drivers side	SLNTLW0675024		24"	404 lbs
*	Drivers side	SLNTLW0675036	7-3/4"	36"	424 lbs
0010HCW	Drivers side	SLNTLW0775012		12"	389 lbs
0010HYK	Drivers side	SLNTLW0775024		24"	409 lbs
*	Drivers side	SLNTLW0775036	8-3/4"	36"	429 lbs
0010HYC	Drivers side	SLNTLW0875012		12"	395 lbs
0010HYL	Drivers side	SLNTLW0875024	8-3/4"	24"	415 lbs
*	Drivers side	SLNTLW0875036		36"	435 lbs

*Contact Navistar Sales Engineering



Moderate Duty Plate Mount Assemblies

No-Slack® II 6000, 7000 and 7000CC PML



Features

- Replaces all FMA mounts with Navistar L plates
- Average weight saving of 75 lbs!
- Two-inch adjustment increments
- New greaseless bracket liner
- Dual durometer two-piece bushing
- Reinforced cast bracket for lighter weight and greater strength
- New ultra-low 5.625" height mount now available.

Fontaine recommends you specify PML models instead of FMA. The weight savings are an average of 75 lbs. lighter with the same capacity! See last column for weight savings of each model.



6000 PML
50,000 pounds
vertical load



7000 PML
55,000 pounds
vertical load



7000CC PML
55,000 pounds
vertical load

FMA Navistar Code	Release Type	FMA Part Number	FMA Weight (lbs)	Navistar L Plate Weight	Total Weight (lbs)	PML Navistar Code	PML Part Number	PML Height	PML Weight (lbs)	PML Weight Savings
*	Drivers side	—	—	—	—	Contact Navistar Sales Engineering	SL6PML5625	5-5/8"	295	—
0010EXS	Drivers side	SL6FMA-D64-1	320	66	386		SL6PML6250	6-1/4"	297	-89
0010EWW	Drivers side	SL6FMA-D64-2	328	66	394		SL6PML7250	7-1/4"	304	-90
Contact Navistar Sales Engineering	Drivers side	SL6FMA-D64-3	336	66	402		SL6PML8250	8-1/4"	312	-90
	Drivers side	SL6FMA-D64-4	344	66	410		SL6PML9250	9-1/4"	317	-93
	Passenger side	SR6FMA-D64-7	328	66	394		SR6PML7250	7-1/4"	304	-90
*	Drivers side	—	—	—	—	Contact Navistar Sales Engineering	SL7PML5625	5-5/8"	318	—
*	Drivers side	SL7FMA-D69-1	332	66	398		SL7PML6250	6-1/4"	320	-78
0010EYD	Drivers side	SL7FMA-D69-2	340	66	406		SL7PML7250	7-1/4"	327	-79
0010EYC	Drivers side	SL7FMA-D69-3	348	66	414		SL7PML8250	8-1/4"	335	-79
Contact Navistar Sales Engineering	Drivers side	SL7FMA-D70-1	332	66	398		AL7PML6250	6-1/4"	325	-73
	Air actuated	AA7FMA-D69-11	337	66	403		AA7PML6250	6-1/4"	325	-78
	Passenger side	SR7FMA-D69-6	332	66	398		SR7PML6250	6-1/4"	320	-78
	Passenger side	SR7FMA-D69-7	340	66	406		SR7PML7250	7-1/4"	327	-79
	Passenger side	SR7FMA-D69-8	348	66	414		SR7PML8250	8-1/4"	335	-79
	Air actuated	AA7FMA-D69-12	345	66	411		AA7PML7250	7-1/4"	332	-79
	Drivers side	SL7FMA-D70-2	340	66	406		AL7PML7250	7-1/4"	332	-74
	Drivers side	SL7FMA-D70-3	348	66	414		AL7PML8250	8-1/4"	340	-74
	Drivers side	SL7FMA-D70-4	356	66	422		AL7PML9250	9-1/4"	345	-77
1*	Air actuated	AAE7FMA-D75-11	318	66	384		AAE7PML6250	6-1/4"	325	-59
1*	Air actuated	AAE7FMA-D75-12	325	66	391		AAE7PML7250	7-1/4"	332	-59
1*	Air actuated	AAE7FMA-D75-13	332	66	398	AAE7PML8250	8-1/4"	340	-58	
Contact Navistar Sales Engineering	Drivers side	—	—	—	—	Contact Navistar Sales Engineering	SLCPML5625	5-5/8"	321	—
	Drivers side	SLCFMA-D71-1	313	66	379		SLCPML6250	6-1/4"	323	-56
	Air actuated	AAECFMA-D77-6	318	66	384		AAECPML6250	6-1/4"	328	-56
	Drivers side	SLCFMA-D71-2	320	66	386		SLCPML7250	7-1/4"	330	-56
	Air actuated	AACFMA-D71-11	318	66	384		AACPML6250	6-1/4"	328	-56
	Drivers side	SLCFMA-D71-3	327	66	393		SLCPML8250	8-1/4"	338	-55
	Air actuated	AACFMA-D71-12	325	66	391		AACPML7250	7-1/4"	335	-56
	Air actuated	AACFMA-D71-13	332	66	398		AACPML8250	8-1/4"	343	-55

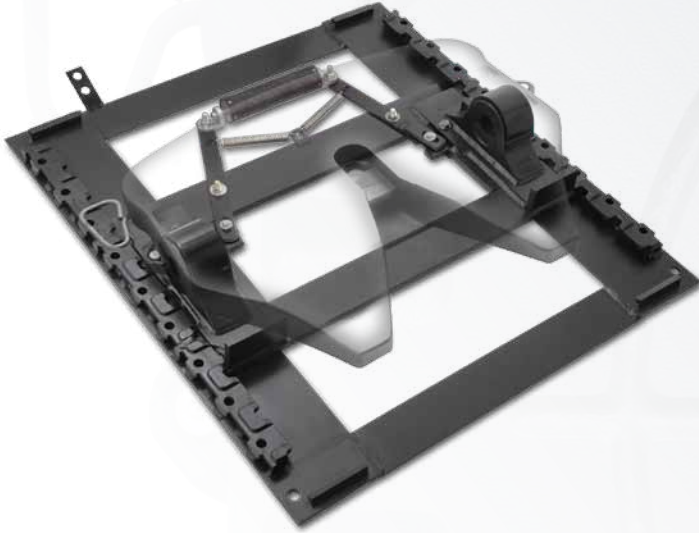
*Contact Navistar Sales Engineering.

¹Electronic lock indicator model.

Standard/Moderate Duty Air Slide Assemblies

Air Slide Bracket

No-Slack® II 6000, 7000, 7000CC LWB Slide



6000 LWB
50,000 pounds vertical load

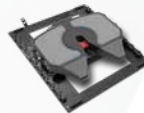
Navistar Code	Release Type	6000 LWB Part Number	Fifth Wheel Height	Slide Length	Weight
0010HHB	Air actuated	AA6LWB675012	6-3/4"	12"	418 lbs
0010HHD	Drivers side	SL6LWB675012		12"	413 lbs
Contact Navistar Sales Engineering	Passenger side	SR6LWB675012		12"	413 lbs
	Air actuated	AA6LWB675024	7-1/4"	24"	438 lbs
	Drivers side	SL6LWB675024		24"	433 lbs
	Air actuated	AA6LWB725024	8-1/4"	24"	440 lbs
	Drivers side	SL6LWB725024		24"	435 lbs
	Drivers side	SL6LWB825024	9-1/4"	24"	441 lbs
	Drivers side	SL6LWB925024		24"	448 lbs



7000 LWB
55,000 pounds vertical load

Navistar Code	Release Type	7000 LWB Part Number	Fifth Wheel Height	Slide Length	Weight
0010HHW	Drivers side	SL7LWB675012	6-3/4"	12"	438 lbs
0010HJA	Drivers side	SL7LWB675024		24"	458 lbs
*	Air actuated	AA7LWB725012	7-1/4"	12"	445 lbs
0010HHY	Drivers side	SL7LWB725012		12"	440 lbs
0010HHH	Air actuated	AA7LWB725024		24"	465 lbs
0010HJB	Drivers side	SL7LWB725024	8-1/4"	24"	460 lbs
*	Drivers side	SL7LWB825012		12"	446 lbs
0010HJC	Drivers side	SL7LWB825024	9-1/4"	24"	466 lbs
0010HJD	Drivers side	SL7LWB925024		24"	473 lbs

*Contact Navistar Sales Engineering



7000CC Clean Connect LWB
55,000 pounds vertical load

Navistar Code	Release Type	7000CC LWB Part Number	Fifth Wheel Height	Slide Length	Weight
Contact Navistar Sales Engineering	Drivers side	SLCLWB675012	6-3/4"	12"	441 lbs.
	Air actuated	AACLWB675024		24"	466 lbs.
	Drivers side	SLCLWB675024	7-1/4"	24"	461 lbs.
	Air actuated	AACLWB725012		12"	449 lbs.
	Drivers side	SLCLWB725012		12"	444 lbs.
	Drivers side	SLCLWB725024	8-1/4"	24"	463 lbs.
	Drivers side	SLCLWB825012		12"	449 lbs.
Drivers side	SLCLWB825024	24"	469 lbs.		

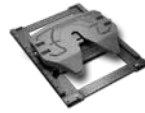
Features

- No-Slack® design
- Light Weight Bracket slide assembly system is lighter than its predecessor without losing an ounce of capacity!
- Save 20 to 50 lbs depending on mounting system configuration
- Computer-aided design features a smaller footprint with steel reinforcement for strength and durability
- Improved fuel economy and a low up-charge make this new design very attractive for weight-sensitive, cost-conscious fleets
- Greaseless bracket liner offers consistent lubrication, reduces wear (no metal-to-metal contact) and cuts maintenance costs
- Two-inch slide increments give you greater versatility for improved payload distribution
- Quad-Lock four-point locking system increases locking surface area for greater stability and improved wear characteristics
- Automatically removes slack from the slide assembly for a smoother ride and longer service life
- Dual durometer two-piece bushing for improved shock absorption and easier maintenance



Air Slide

No-Slack® II 7000 & No-Slack® H5092 AWB Slide



7000 AWB
55,000 pounds
vertical load



H5092 AWB
62,500 pounds
vertical load

Features

If it seems like you're repositioning your fifth wheel after every load, here's the perfect solution. The Fontaine AWB air slide bracket makes adjustments faster and easier than ever before. Here's how it works. An air cylinder drives a mechanical linkage to release the slide locking wedges. To protect the stainless steel shaft from corrosion, bending and roadspray, the unit operates from a closed position. The Fontaine air slide fifth wheel is available in a wide range of mounting heights and travel lengths to meet your hauling needs.

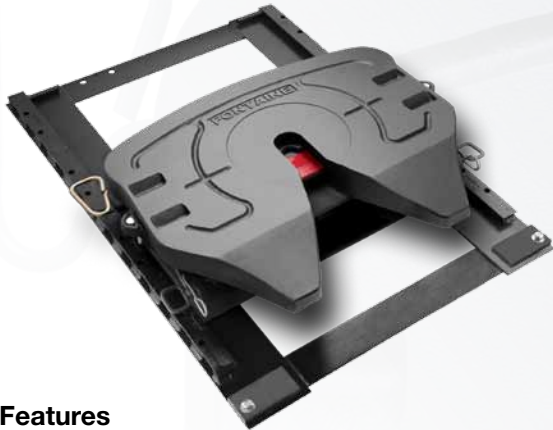
- Composite air cylinder features improved sealing performance and superior corrosion resistance for longer service life

7000 AWB Part Number	Fifth Wheel Height	Slide Length	Weight
SL7AWS675012	6-3/4"	12"	481 lbs
SL7AWS675016		16"	489 lbs
SL7AWS675020		20"	493 lbs
SL7AWS675024		24"	501 lbs
SL7AWS675036		36"	516 lbs
SL7AWS675048		48"	551 lbs
SL7AWB775012	7-3/4"	12"	487 lbs
SL7AWB775016		16"	495 lbs
SL7AWB775020		20"	499 lbs
SL7AWB775024		24"	508 lbs
SL7AWB775036		36"	522 lbs
SL7AWB775048		48"	557 lbs
SL7AWB875012	8-3/4"	12"	493 lbs
SL7AWB875016		16"	501 lbs
SL7AWB875020		20"	505 lbs
SL7AWB875024		24"	514 lbs
SL7AWB875036		36"	528 lbs
SL7AWB875048		48"	563 lbs
SL7AWB975012	9-3/4"	12"	499 lbs
SL7AWB975016		16"	507 lbs
SL7AWB975020		20"	511 lbs
SL7AWB975024		24"	500 lbs
SL7AWB975036		36"	534 lbs
SL7AWB975048		48"	569 lbs
SL7AWB1075012	10-3/4"	12"	520 lbs
SL7AWB1075016		16"	527 lbs
SL7AWB1075020		20"	531 lbs
SL7AWB1075024		24"	540 lbs
SL7AWB1075036		36"	554 lbs
SL7AWB1075048		48"	589 lbs

H5092 AWB Part Number	Fifth Wheel Height	Slide Length	Weight
SLHAWS675012	6-3/4"	12"	513 lbs
SLHAWS675016		16"	521 lbs
SLHAWS675020		20"	525 lbs
SLHAWS675024		24"	533 lbs
SLHAWS675036		36"	548 lbs
SLHAWS675048		48"	583 lbs
SLHAWB775012	7-3/4"	12"	519 lbs
SLHAWB775016		16"	527 lbs
SLHAWB775020		20"	531 lbs
SLHAWB775024		24"	540 lbs
SLHAWB775036		36"	554 lbs
SLHAWB775048		48"	589 lbs
SLHAWB875012	8-3/4"	12"	525 lbs
SLHAWB875016		16"	533 lbs
SLHAWB875020		20"	537 lbs
SLHAWB875024*		24"	546 lbs
SLHAWB875036		36"	560 lbs
SLHAWB875048		48"	595 lbs
SLHAWB975012	9-3/4"	12"	531 lbs
SLHAWB975016		16"	539 lbs
SLHAWB975020		20"	543 lbs
SLHAWB975024		24"	532 lbs
SLHAWB975036		36"	566 lbs
SLHAWB975048		48"	601 lbs
SLHAWB1075012	10-3/4"	12"	551 lbs
SLHAWB1075016		16"	559 lbs
SLHAWB1075020		20"	563 lbs
SLHAWB1075024		24"	572 lbs
SLHAWB1075036		36"	586 lbs
SLHAWB1075048		48"	621 lbs

Contact Navistar Sales Engineering to order.
H5092 models are available as SL and BL only.

Blocked Air Slide
No-Slack® II 7000 and No-Slack®
H5092 Blocked AWB



Features

The Fontaine heavy duty blocked air slide fifth wheel is like two fifth wheels in one. You can use it for standard heavy duty applications or a non-rocking fifth wheel for frameless dump applications. Get all the versatility you'll ever need with the strength and durability you demand.



Blocked 7000 AWB
 55,000 pounds
 vertical load

7000 Blocked AWB Part Number	Fifth Wheel Height	Slide Length	Weight
BL7AWB875012	8-3/4"	12"	509 lbs
BL7AWB875024		24"	529 lbs
BL7AWB875036		36"	543 lbs
BL7AWB875048		48"	578 lbs
BL7AWB975012	9-3/4"	12"	518 lbs
BL7AWB975024		24"	538 lbs
BL7AWB975036		36"	552 lbs
BL7AWB975048	10-3/4"	48"	587 lbs
BL7AWB1075012		12"	555 lbs
BL7AWB1075024		24"	575 lbs
BL7AWB1075036		36"	589 lbs
BL7AWB1075048	48"	624 lbs	



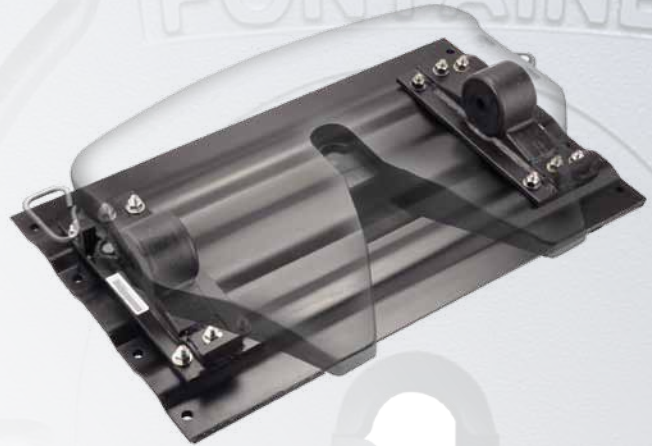
Blocked H5092 AWB
 62,500 pounds
 vertical load

H5092 Blocked AWB Part Number	Fifth Wheel Height	Slide Length	Weight
BLHAWB875012	8-3/4"	12"	541 lbs
BLHAWB875024		24"	561 lbs
BLHAWB875036		36"	575 lbs
BLHAWB875048		48"	610 lbs
BLHAWB975012	9-3/4"	12"	550 lbs
BLHAWB975024		24"	570 lbs
BLHAWB975036		36"	584 lbs
BLHAWB975048		48"	618 lbs
BLHAWB1075012	10-3/4"	12"	587 lbs
BLHAWB1075024		24"	607 lbs
BLHAWB1075036		36"	621 lbs
BLHAWB1075048		48"	656 lbs

Contact Navistar Sales Engineering to order.
 H5092 models are available as SL and BL only.

Severe Duty Assemblies

Reinforced Stationary Plate
No-Slack® II 7000 & No-Slack® H5092 PS4



Features

When you're hauling really heavy loads, Fontaine Reinforced Stationary Plate Mounts give you the extra strength you need. The corrugated design features additional structural steel reinforcement to provide greater stability. The 7PS4 is the perfect choice for heavy loads and severe service applications. Choose 7PS4 for off-highway and HPS4 for off-highway severe duty.



7000 PS4
 55,000 pounds
 vertical load



H5092 PS4
 62,500 pounds
 vertical load

7000 PS4 Part Number	Fifth Wheel Height	Weight	H5092 PS4 Part Number	Fifth Wheel Height	Weight
SL7PS47375	7-3/8"	394 lbs	SLHPS47375	7-3/8"	426 lbs
SL7PS48375	8-3/8"	398 lbs	SLHPS48375	8-3/8"	430 lbs
SL7PS49375	9-3/8"	402 lbs	SLHPS49375	9-3/8"	434 lbs
SL7PS410375	10-3/8"	438 lbs	SLHPS410375	10-3/8"	470 lbs

Contact Navistar Sales Engineering to order.
 H5092 models are available as SL and BL only.

Mount	Description	Width x length	Holes per side	Hole spacing across frame
PS4	Plate short	40.00" x 23.75"	4 (3/4" hardware)	38"

First hole measured from rear, then spacing between holes:
 1.88", 6.00" - 8.00" - 6.00"

PS4 is the Navistar preferred stationary plate model.



Focused on Fifth Wheels

The Fontaine® Fifth Wheel R&D Center is the largest, best equipped laboratory in the world focused exclusively on fifth wheel technology.



Models Lookup

For a more complete product listing please scan code below or go to:
www.fifthwheel.com/models/



Selection Guide

Scan code or go to:
www.fifthwheel.com
Choose "Support" then choose
"Choosing the right fifth wheel"



Complete Assembly Brochure

Scan code or go to:
www.fifthwheel.com
Choose "Product" then choose
"Complete assembly brochure"

