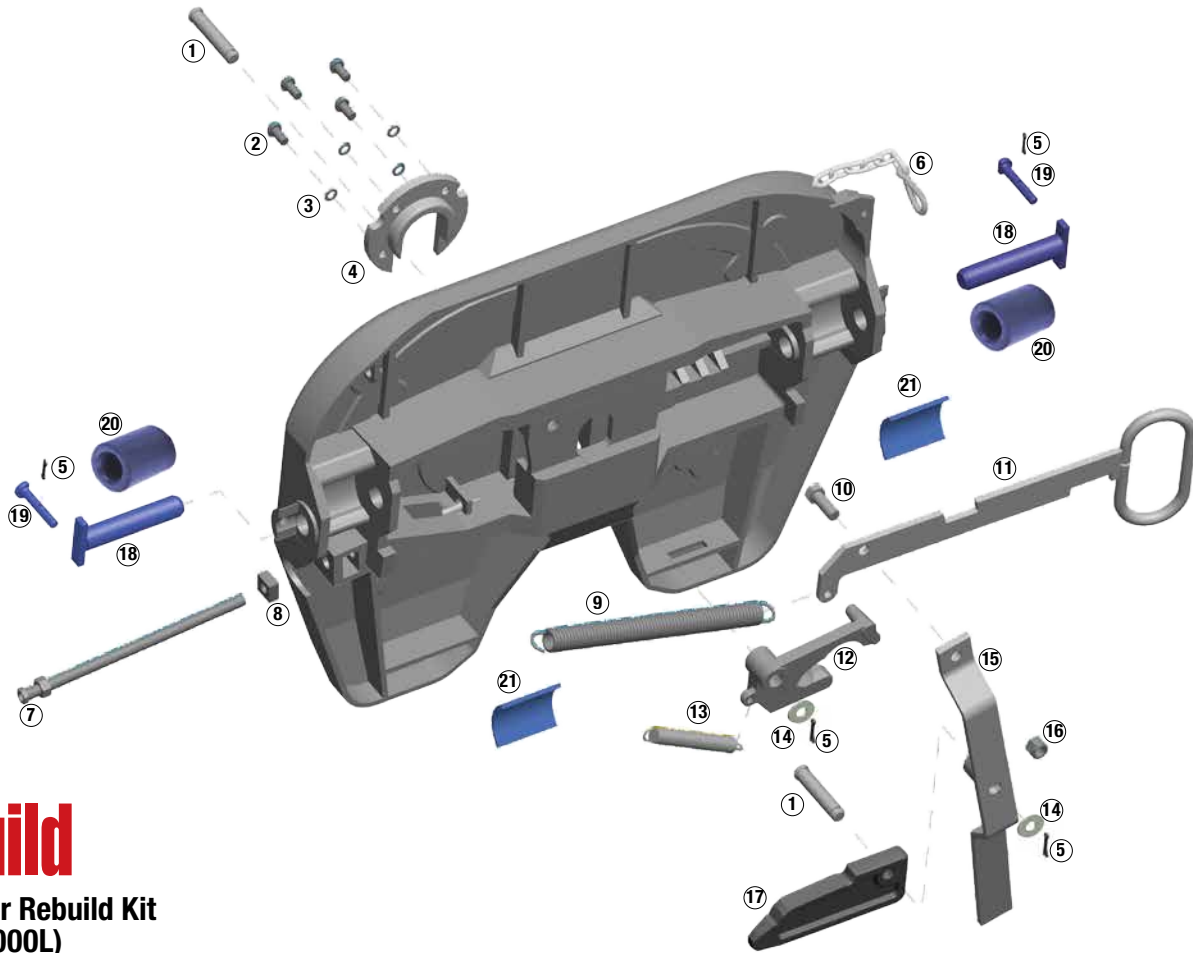


# 3000 Series Top Plate Kits



## Rebuild

### 3000 Major Rebuild Kit (KIT-RX-3000L)



Item	Description	Qty.
①	Pivot Pin	2
②	Hex Socket Button Head Screw, M12X25MM	4
③	Flat Washer, M12	4
④	Wear Ring	1
⑤	Cotter Pin	2
⑥	Security Clip	1
⑦	Adjustment Rod	1
⑧	Adjustment Rod Nut, M16 Square	1
⑨	Main Spring	1
⑩	Hex Head Bolt, M16 X 45MM	1
⑪	Pull Handle	1
⑫	Rotating Locking Jaw	1
⑬	Jaw Spring	1
⑭	Washer, 3/4"	2
⑮	Operating Handle	1
⑯	Nylok Nut, M16	1
⑰	Locking Wedge	1

## Replace



**NT**  
SLTPLUNT (*Driver side release*)  
SRTPLUNT (*Passenger side*)

### Bracket pin kit (KIT-PIN-3000)

Item	Description	Qty.
⑤	Cotter pin	2
⑰	Bracket pin	2
⑱	Bracket retainer pin	2
⑳	1-piece bushing	2

### Bushing kit (BSH-3000)

Item	Description	Qty.
⑳	1-piece bushing	2
㉑	Bracket liners	2

# Pin and Bushing Kits

## Bracket Pin and Bushing Kits

### Bracket pin kit (KIT-PIN-LLB)



Item	Qty.
2-piece bushing	2 Pairs
Bracket pin	2
Bracket retainer pin	2
Cotter pin	2
Bracket liner	2

### Bracket pin kit (KIT-PIN-191)



Item	Qty.
1-piece bushing	2
Bracket pin	2
Bracket retainer pin	2
Cotter pin	2

### Bracket pin kit (KIT-PIN-UNT)



Item	Qty.
1-piece bushing	2
Bracket pin	2
Bracket retainer pin	2
Cotter pin	2
Bracket Liner	2

### Bracket pin kit (KIT-PIN-3000)



Item	Qty.
Bracket liners	2
1-piece bushing	2
Bracket pin	2
Bracket retainer pin	2
Cotter pin	2

## Bushing Kits

### Bushing kit (BSH-LLB)



Item	Qty.
2-piece bushing	2 Pairs
Bracket liner	2

### Bushing kit (BSH-150)



Item	Qty.
1-piece bushing	2

### Bushing kit (BSH-3000)



Item	Qty.
1-piece bushing	2
Bracket liners	2

## Bracket Pin and Bushing Kit Guide

Top Plate Mount	Top Plate	Bracket Pin Kit	Bushing Kit
<b>Sliding Brackets</b>			
ATB	6000, 7000, 7000CC	<b>KIT-PIN-LLB</b>	<b>BSH-LLB</b>
AWB	7000, H5092, H7	<b>KIT-PIN-191</b>	<b>BSH-150</b>
<b>AWB Blocked BLAWB</b>	7000, H5092, H7	<b>KIT-PIN-191</b>	<b>BSH-150</b>
AWX	H5092, H7	<b>KIT-PIN-XHD</b>	<b>BSH-150</b>
LWB	6000, 7000, 7000CC	<b>KIT-PIN-LLB</b>	<b>BSH-LLB</b>
LWO	NT, 3000	<b>KIT-PIN-UNT*</b>	<b>BSH-3000</b>
MTB	6000, 7000, 7000CC	<b>KIT-PIN-LLB</b>	<b>BSH-LLB</b>
MWS	H5092, H7	<b>KIT-PIN-191</b>	<b>BSH-150</b>
NWB	6000	<b>KIT-PIN-LLB</b>	<b>BSH-LLB</b>
XPSA	X5092	<b>KIT-PIN-XHD</b>	<b>BSH-150</b>
ASB	NT, 3000	<b>KIT-PIN-3000</b>	<b>BSH-3000</b>

Top Plate Mount	Top Plate	Bracket Pin Kit	Bushing Kit
<b>Fixed Mount/Plate Mount</b>			
APB	NT, 3000	<b>KIT-PIN-UNT*</b>	<b>BSH-3000</b>
BSL	6000, 7000, 7000CC	<b>KIT-PIN-LLB</b>	<b>BSH-LLB</b>
BSM	6000, 7000, 7000CC	<b>KIT-PIN-LLB</b>	<b>BSH-LLB</b>
FMA	6000, 7000, 7000CC	<b>KIT-PIN-191</b>	<b>BSH-150</b>
FMA D3	6000, 7000, 7000CC	<b>KIT-PIN-191</b>	<b>BSH-150</b>
PMA	6000, 7000, 7000CC	<b>KIT-PIN-LLB</b>	<b>BSH-LLB</b>
PML	6000, 7000, 7000CC	<b>KIT-PIN-LLB</b>	<b>BSH-LLB</b>
PSA	H5092, H7	<b>KIT-PIN-191</b>	<b>BSH-150</b>
PS5	H5092, H7	<b>KIT-PIN-191</b>	<b>BSH-150</b>
<b>PS5 Blocked (BLPS5)</b>	H5092, H7	<b>KIT-PIN-191</b>	<b>BSH-150</b>
SMB	NT, 3000	<b>KIT-PIN-UNT*</b>	<b>BSH-3000</b>
XPSA	X5092	<b>KIT-PIN-XHD</b>	<b>BSH-150</b>

\*If 3000 Series top plate on the bracket or slide, use KIT-PIN-3000.