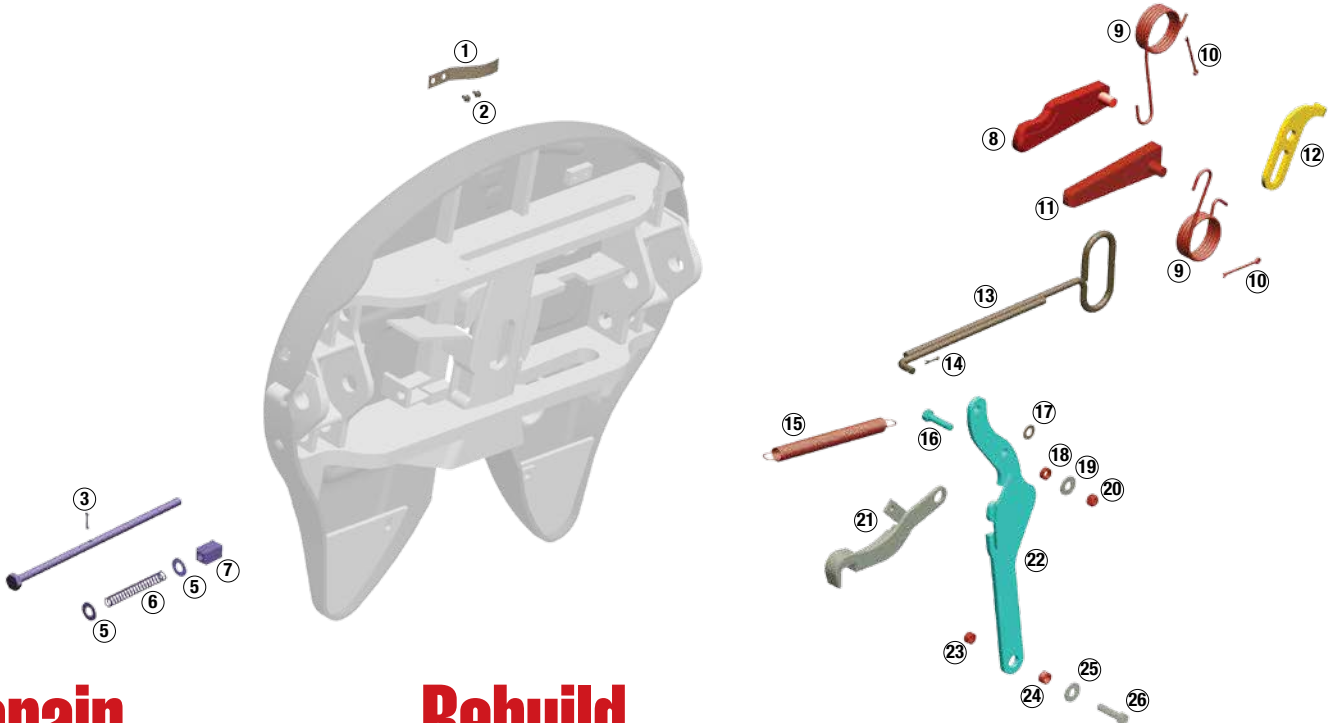


No-Slack® Top Plate Kits

H5092/X5092 series



Repair

Repair kit (KIT-RPR-5092L or R)

Item	Description	Qty.
⑧	Step jaw	1
⑨	Jaw and wedge spring	2
⑩	Cotter pin, 1/4" x 3"	2
⑪	Wedge	1
⑮	Bumper spring	1
⑱	Bushing, 5/16"	1
⑲	Hex lock nut, 1/2" - 13	1
⑳	Bushing, 7/16"	1
㉑	Hex lock nut, 1/2" - 13	1

Wedge-stop rod kit (KIT-ROD-1108)

Item	Description	Quan.
③	Cotter pin, 3/16" x 1"	1
④	Wedge-stop rod	1
⑤	Flat washer, 5/8" I.D.	2
⑥	Wedge-stop rod spring	1
⑦	Wedge-stop rod nut	1

Pull handle kit (KIT-PUL-5092)

Item	Description	Quan.
①	Leaf spring	1
②	Self tapping screw	2
⑬	Pull handle	1
⑭	Cotter pin, 3/16" x 1"	1
⑰	Flat washer, 1/2" I.D.	1

Timer kit (KIT-TMR-134L or R)

Item	Description	Quan.
⑫	Timer	1
⑱	Bushing 5/16"	1
⑲	Hex lock nut, 1/2" - 13	1
㉑	Bushing 7/16"	1

Rebuild

Part number: KIT-RX-5092L

Major rebuild kit for left side (driver) handle release H5092 and X5092 top plates.

Kit does not include bracket pins, bushings.



- Multiple kits combined in one saves you money
- Parts are arranged in the sequence you need them
- Complete instructions and link to video to make rebuild easy
- Reduce inventory
- Keep all the benefits of No-Slack® technology

Replace



H7 Heavy Duty
SLTPLH7 (Driver side release)

- Excellent replacement for H5092 and X5092 fifth wheel top plates
- Mounts on existing H5092/X5092 slides and brackets
- 70,000 lbs vertical load
- 150,000 to 200,00 lbs drawbar pull
- Improved No-Slack® locking mechanism

Bumper kit (KIT-BPR-5092L or R)

Item	Description	Quan.
⑪	Wedge	1
⑮	Bumper spring	1
⑱	Bushing, 5/16"	1
㉑	Bumper	1
⑲	Hex lock nut, 1/2" - 13	1
⑳	Bushing, 7/16"	1
㉑	Flat washer, 1/2" I.D.	1
㉒	Hex head bolt, 1/2" - 13	1

Operating handle kit (OPR-5000SL or SR)

Item	Description	Quan.
⑱	Hex head bolt, 1/2" - 13	1
⑱	Bushing 5/16"	1
⑲	Flat washer, 1/2" I.D.	1
⑲	Hex lock nut, 1/2" - 13	1
㉑	Operating handle	1
⑲	Hex lock nut, 1/2" - 13	1
⑲	Bushing 7/16"	1
⑲	Flat washer, 1/2" I.D.	1
㉑	Hex head bolt, 1/2" - 13	1

No-Slack® Top Plate Kits

H5092/X5092 series

Repair

Repair kit (KIT-RPR-5092L or R)



Item	Qty.
Step jaw	1
Jaw and wedge spring	2
Cotter pin, 1/4" x 3"	2
Wedge	1
Bumper spring	1
Bushing, 5/16"	1
Hex lock nut, 1/2" - 13	1
Bushing, 7/16"	1
Hex lock nut, 1/2" - 13	1

Pull handle kit (KIT-PUL-5092)



Item	Qty.
Leaf spring	1
Self tapping screw	2
Pull handle	1
Cotter pin, 3/16" x 1"	1
Flat washer, 1/2" I.D.	1

Bumper kit (KIT-BPR-5092L or R)



Item	Qty.
Wedge	1
Bumper spring	1
Bushing, 5/16"	1
Bumper	1
Hex lock nut, 1/2" - 13	1
Bushing, 7/16"	1
Flat washer, 1/2" I.D.	1
Hex head bolt, 1/2" - 13	1

Wedge-stop rod kit (KIT-ROD-1108)



Item	Qty.
Wedge-stop rod nut	1
Flat washer, 5/8" I.D.	2
Wedge-stop rod spring	1
Wedge-stop rod	1
Cotter pin, 3/16" x 1"	1

Timer kit (KIT-TMR-134L or R)



Item	Qty.
Timer	1
Bushing 5/16"	1
Hex lock nut, 1/2" - 13	1
Bushing 7/16"	1

Operating handle kit (OPR-5000SL or SR)



Description	Qty.
Hex head bolt, 1/2" - 13	1
Bushing 5/16"	1
Flat washer, 1/2" I.D.	1
Hex lock nut, 1/2" - 13	1
Operating handle	1
Hex lock nut, 1/2" - 13	1
Bushing 7/16"	1
Flat washer, 1/2" I.D.	1
Hex head bolt, 1/2" - 13	1



Pin and Bushing Kits

Bracket Pin and Bushing Kits

Bracket pin kit (KIT-PIN-LLB)



Item	Qty.
2-piece bushing	2 Pairs
Bracket pin	2
Bracket retainer pin	2
Cotter pin	2
Bracket liner	2

Bracket pin kit (KIT-PIN-191)



Item	Qty.
1-piece bushing	2
Bracket pin	2
Bracket retainer pin	2
Cotter pin	2

Bracket pin kit (KIT-PIN-UNT)



Item	Qty.
1-piece bushing	2
Bracket pin	2
Bracket retainer pin	2
Cotter pin	2
Bracket Liner	2

Bracket pin kit (KIT-PIN-3000)



Item	Qty.
Bracket liners	2
1-piece bushing	2
Bracket pin	2
Bracket retainer pin	2
Cotter pin	2

Bushing Kits

Bushing kit (BSH-LLB)



Item	Qty.
2-piece bushing	2 Pairs
Bracket liner	2

Bushing kit (BSH-150)



Item	Qty.
1-piece bushing	2

Bushing kit (BSH-3000)



Item	Qty.
1-piece bushing	2
Bracket liners	2

Bracket Pin and Bushing Kit Guide

Top Plate Mount	Top Plate	Bracket Pin Kit	Bushing Kit
Sliding Brackets			
ATB	6000, 7000, 7000CC	KIT-PIN-LLB	BSH-LLB
AWB	7000, H5092, H7	KIT-PIN-191	BSH-150
AWB Blocked BLAWB	7000, H5092, H7	KIT-PIN-191	BSH-150
AWX	H5092, H7	KIT-PIN-XHD	BSH-150
LWB	6000, 7000, 7000CC	KIT-PIN-LLB	BSH-LLB
LWO	NT, 3000	KIT-PIN-UNT*	BSH-3000
MTB	6000, 7000, 7000CC	KIT-PIN-LLB	BSH-LLB
MWS	H5092, H7	KIT-PIN-191	BSH-150
NWB	6000	KIT-PIN-LLB	BSH-LLB
XPSA	X5092	KIT-PIN-XHD	BSH-150
ASB	NT, 3000	KIT-PIN-3000	BSH-3000

Top Plate Mount	Top Plate	Bracket Pin Kit	Bushing Kit
Fixed Mount/Plate Mount			
APB	NT, 3000	KIT-PIN-UNT*	BSH-3000
BSL	6000, 7000, 7000CC	KIT-PIN-LLB	BSH-LLB
BSM	6000, 7000, 7000CC	KIT-PIN-LLB	BSH-LLB
FMA	6000, 7000, 7000CC	KIT-PIN-191	BSH-150
FMA D3	6000, 7000, 7000CC	KIT-PIN-191	BSH-150
PMA	6000, 7000, 7000CC	KIT-PIN-LLB	BSH-LLB
PML	6000, 7000, 7000CC	KIT-PIN-LLB	BSH-LLB
PSA	H5092, H7	KIT-PIN-191	BSH-150
PS5	H5092, H7	KIT-PIN-191	BSH-150
PS5 Blocked (BLPS5)	H5092, H7	KIT-PIN-191	BSH-150
SMB	NT, 3000	KIT-PIN-UNT*	BSH-3000
XPSA	X5092	KIT-PIN-XHD	BSH-150

*If 3000 Series top plate on the bracket or slide, use KIT-PIN-3000.