

No-Slack® Top Plate Kits

No-Slack® NT/6000/7000/7000CC

Repair

Repair kit (KIT-RPR-6000L or R)

Item	Description	Qty.
⑥	Bumper spring	1
⑦	Handle spring	1
③⑦	Timer spring	1
②①	Step jaw	1
②②	Wedge	1
⑩	Bushing, 7/16"	1
⑮	Bushing, 5/16"	1
⑰	Bushing, 1 1/4"	1
⑫	Hex lock nut, 1/2" - 13	3

Spring kit (KIT-SPRING)

⑥	Bumper spring	1
⑦	Handle spring	1
⑰	Timer spring	1

Wedge-stop rod kit (KIT-ROD-1108)

①	Wedge-stop rod nut	1
②	Flat washer, 5/8" I.D.	2
③	Wedge-stop rod spring	1
④	Wedge-stop rod	1
⑤	Cotter pin, 3/16" x 1"	1

Secondary lock kit (KIT-LAT-6000L or R)

⑦	Handle spring	1
⑧	Hex head bolt, 1/2" - 13	1
⑨	Flat washer, 1/2" I.D.	2
⑩	Bushing, 7/16"	1
⑪	Secondary lock	1
⑫	Hex lock nut, 1/2" - 13	1
⑤	Cotter pin, 3/16" x 1"	1

Pull handle kit (KIT-PUL-6000L or R)

⑬	Pull handle	1
⑭	Flat washer, 1/2" I.D.	1
⑤	Cotter pin, 3/16" x 1"	1

Bumper kit (KIT-BPR-6000L or R)

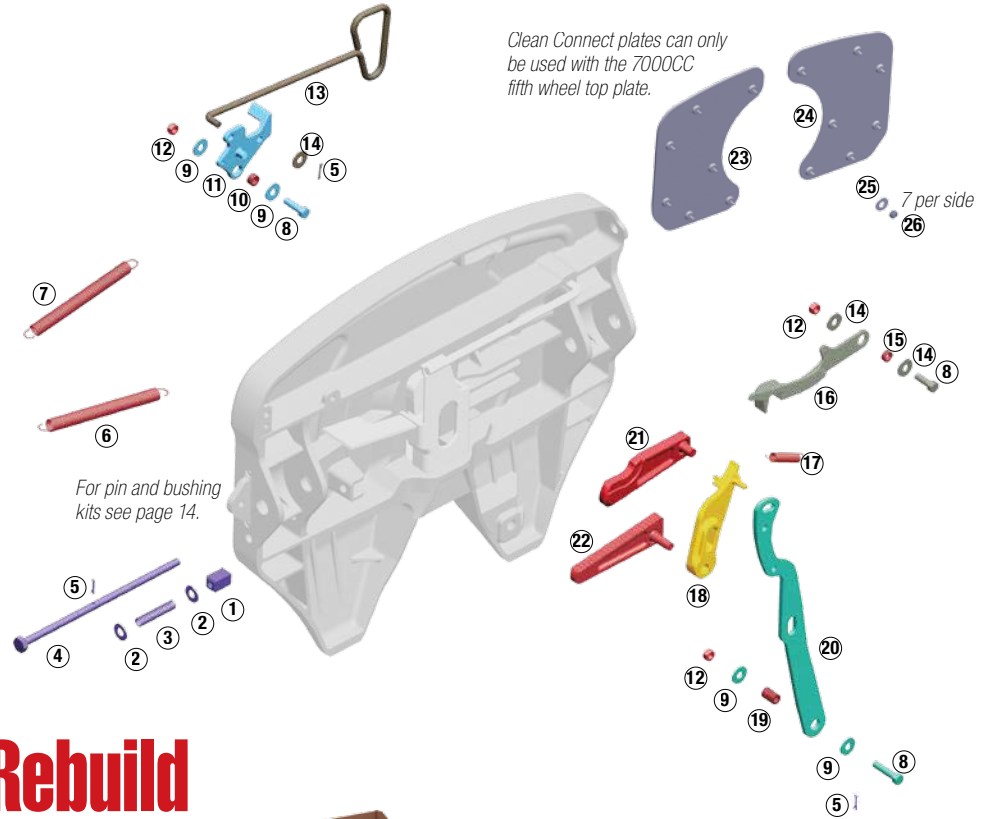
⑫	Hex lock nut, 1/2" - 13	1
⑭	Flat washer, 1/2" I.D.	2
⑮	Bushing	1
⑧	Hex head bolt, 1/2" - 13	1
⑯	Bumper	1
⑥	Bumper spring	1

Timer kit (KIT-TMR-6000L or R)

⑰	Timer spring	1
⑱	Timer	1
⑫	Hex lock nut, 1/2" - 13	1
⑤	Hair pin cotter	1

Operating handle kit (KIT-OPR-6000)

⑩	Bushing, 7/16"	1
⑮	Bushing, 5/16"	1
⑰	Bushing, 1 1/4"	1
⑫	Hex lock nut, 1/2" - 13	3
⑨	Flat washer, 1/2" I.D.	2
⑧	Hex head bolt, 1/2" - 13	1
⑳	Operating handle	1
⑤	Hair pin cotter	1



Rebuild

Part number: KIT-RX-67NTL

Major rebuild kit for left side (driver) handle release NT/6000/ 7000/ 7000CC.

Kit does not include bracket pins, bushings or Clean Connect plate kits.

- 7 kits shown at left combined in 1 saves you time and money
- Parts are arranged in the sequence for easy installation
- Complete instructions and link to video
- Reduce inventory
- Keep all the benefits of No-Slack® technology

7000CC Options

Clean Connect plate kits (7000CC)

Item	Description	Qty.
(CCR-PLATES-R)		
⑳	Right CC plate	1
㉕	Flat washer	7
㉖	Hex lock nut	7
(CCR-PLATES-L)		
㉔	Left CC plate	1
㉕	Flat washer	7
㉖	Hex lock nut	7

Replace

Replace or upgrade your fifth wheel top plate.

7000
SLTPL7000 (Driver side release)
SRTPL7000 (Passenger side)
AATPL7000 (Air Actuated)

6000
SLTPL6000 (Driver side release)
SRTPL6000 (Passenger side)

7000CC (Clean Connect)
SLTPL7000CC (Driver side release)
AATPL7000CC (Air Actuated)

NT*
SLTPLUNT (Driver side release)
SRTPLUNT (Passenger side)
**Replaces NT and 3000 models only.*

For ratings see page 4.

For pin and bushing kits see pages 14.

No-Slack® Top Plate Kits

No-Slack® NT/6000/7000/7000CC

Repair

Repair kit (KIT-RPR-6000L or R)



Item	Qty.
Bumper spring	1
Handle spring	1
Timer spring	1
Step jaw	1
Wedge	1
Bushing, 7/16"	1
Bushing, 5/16"	1
Bushing, 1 1/4"	1
Hex lock nut, 1/2" - 13	3

Secondary lock kit (KIT-LAT-6000L or R)



Item	Qty.
Handle spring	1
Hex head bolt, 1/2" - 13	1
Flat washer, 1/2" I.D.	2
Bushing, 7/16"	1
Secondary lock	1
Hex lock nut, 1/2" - 13	1
Cotter pin, 3/16" x 1"	1

Pull handle kit (KIT-PUL-6000L or R)



For H7 pull handle
see page 8.

Item	Qty.
Pull handle	1
Flat washer, 1/2" I.D.	1
Cotter pin, 3/16" x 1"	1

Timer kit (KIT-TMR-6000L or R)



Item	Qty.
Timer spring	1
Timer	1
Hex lock nut, 1/2" - 13	1
Hair pin cotter	1

Wedge-stop rod kit (KIT-ROD-1108)



Item	Qty.
Wedge-stop rod nut	1
Flat washer, 5/8" I.D.	2
Wedge-stop rod spring	1
Wedge-stop rod	1
Cotter pin, 3/16" x 1"	1

Spring kit (KIT-SPRING)



Item	Qty.
Bumper spring	1
Handle spring	1
Timer spring	1

Bumper kit (KIT-BPR-6000L or R)



Item	Qty.
Hex lock nut, 1/2" - 13	1
Flat washer, 1/2" I.D.	2
Bushing	1
Hex head bolt, 1/2" - 13	1
Bumper	1
Bumper spring	1

Operating handle kit (KIT-OPR-6000)



For H7 operating
handle see page 8.

Item	Qty.
Bushing, 7/16"	1
Bushing, 5/16"	1
Bushing, 1 1/4"	1
Hex lock nut, 1/2" - 13	3
Flat washer, 1/2" I.D.	2
Hex head bolt, 1/2" - 13	1
Operating handle	1
Hair pin cotter	1



No-Slack® Top Plate Kits

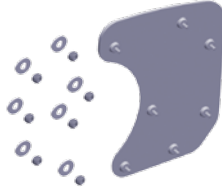
No-Slack® NT/6000/7000/7000CC series top plate kits

Options

7000CC Kit Options

Left Clean Connect Plate kit

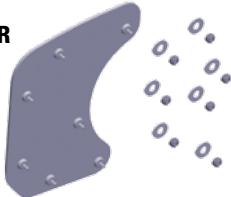
Part number:
CCR-PLATES-L



Item	Qty.
Left CC plate	1
Flat washer	7
Hex lock nut	7

Right Clean Connect Plate kit

Part number:
CCR-PLATES-R



Item	Qty.
Right CC plate	1
Flat washer	7
Hex lock nut	7

Air actuated kit

Part number:
KIT-AA-6000L or KIT-AA-6000LR

This kit includes the parts mounted to the fifth wheel. If you are upgrading from manual to air actuated you will also need KIT-AIR-DASH which includes the parts required to complete the in-dash installation.



Description	Quantity
Hex head bolt	1
Hex lock nut	1
Air cylinder	1
Mini-matic jumbo exhaust valve (VLV-254)	1
Hex lock nut	1
Flat washer	1
Shoulder bolt	1
Springs	2

17-3/8" dimension shown for the air cylinder.

1/2" diameter holes

Part number:
KIT-AIR-DASH



Kit to complete the in-dash installation.

Part number:
KIT-AIR-COIL

Parts required to connect the air actuated fifth wheel or fifth wheel air sliders to the air system.



Part number:
VLV-PUL

Pull valve used in dash



Helpful Tools

After a rebuild don't forget to properly adjust your fifth wheel. See page 26.

Part number:
KITKPT

Test kingpin is an excellent tool for jaw and wedge adjustment (see page 26).



Part number:
KIT-FRX-STAND



*Repair and display stand.
Top plate is not included.*