

No-Slack® Top Plate Kits

No-Slack® H7 series

Repair

Repair kit (KIT-RPR-6000L)

Item	Description	Qty.
⑥	Bumper spring	1
⑦	Handle spring	1
③⑦	Timer spring	1
②①	Step jaw	1
②②	Wedge	1
⑩	Bushing, 7/16"	1
⑮	Bushing, 5/16"	1
⑰	Bushing, 1 1/4"	1
⑫	Hex lock nut, 1/2" - 13	3

Spring kit (KIT-SPRING)

⑥	Bumper spring	1
⑦	Handle spring	1
⑰	Timer spring	1

Wedge-stop rod kit (KIT-ROD-1108)

①	Wedge-stop rod nut	1
②	Flat washer, 5/8" I.D.	2
③	Wedge-stop rod spring	1
④	Wedge-stop rod	1
⑤	Cotter pin, 3/16" x 1"	1

Secondary lock kit (KIT-LAT-6000L)

⑦	Handle spring	1
⑧	Hex head bolt, 1/2" - 13	1
⑨	Flat washer, 1/2" I.D.	2
⑩	Bushing, 7/16"	1
⑪	Secondary lock	1
⑫	Hex lock nut, 1/2" - 13	1
⑤	Cotter pin, 3/16" x 1"	1

Pull handle kit (KITPULH7)

⑬	Heavy Duty Pull Handle	1
⑫	Hex lock nut, 1/2" - 13	1

Bumper kit (KIT-BPR-6000)

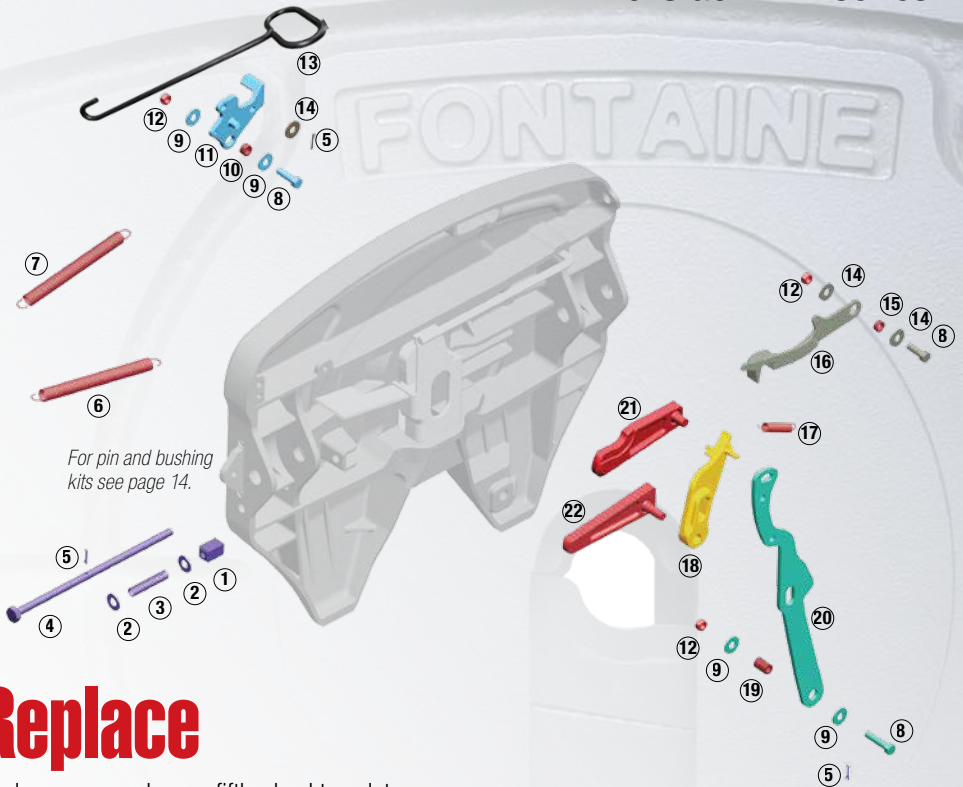
⑫	Hex lock nut, 1/2" - 13	1
⑭	Flat washer, 1/2" I.D.	2
⑮	Bushing	1
⑧	Hex head bolt, 1/2" - 13	1
⑯	Bumper	1
⑥	Bumper spring	1

Timer kit (KIT-TMR-6000L)

⑰	Timer spring	1
⑱	Timer	1
⑫	Hex lock nut, 1/2" - 13	1
⑤	Hair pin cotter	1

Operating handle kit (KITOPRH7)

⑩	Bushing, 7/16"	1
⑮	Bushing, 5/16"	1
⑰	Bushing, 9/16"	1
⑫	Hex lock nut, 1/2" - 13	3
⑨	Flat washer, 1/2" I.D.	2
⑧	Hex head bolt, 1/2" - 13	1
⑳	Operating Handle	1
⑤	Hair pin cotter	1



For pin and bushing kits see page 14.

Replace

Replace or upgrade your fifth wheel top plate.



H7 Heavy Duty
SLTPLH7 (Driver side release)

H7 is the recommended replacement for H5092 and X5092

H7 Repair Kits

Operating handle kit (KITOPRH7)

Item	Qty.
Bushing, 7/16"	1
Bushing, 5/16"	1
Bushing, 9/16"	1
Hex lock nut, 1/2" - 13	3
Flat washer, 1/2" I.D.	2
Hex head bolt, 1/2" - 13	1
Heavy Duty Operating Handle	1
Hair pin cotter	1

Pull handle kit (KITPULH7)

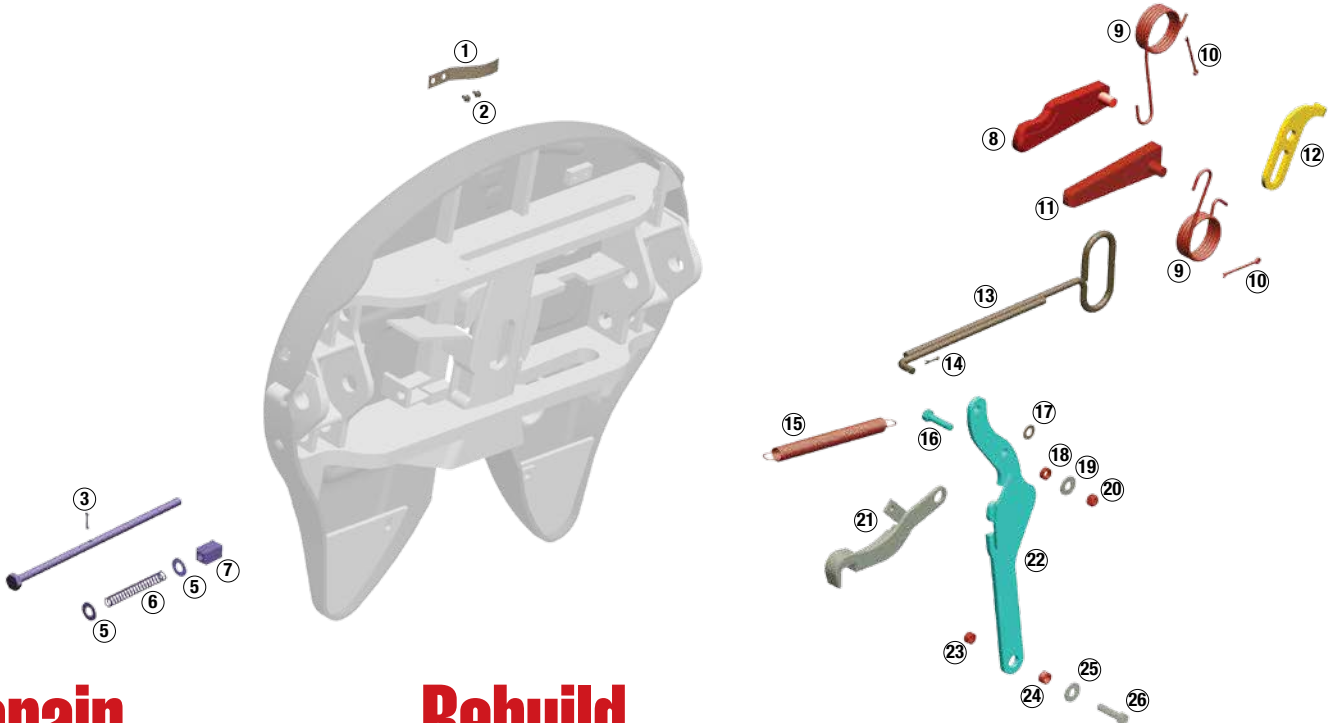
Item	Qty.
Heavy Duty Pull Handle	1
Hex lock nut, 1/2" - 13	1

With the exception of the two kits above, H7 uses same kits as No-Slack on page 6.



No-Slack® Top Plate Kits

H5092/X5092 series



Repair

Repair kit (KIT-RPR-5092L or R)

Item	Description	Qty.
⑧	Step jaw	1
⑨	Jaw and wedge spring	2
⑩	Cotter pin, 1/4" x 3"	2
⑪	Wedge	1
⑮	Bumper spring	1
⑱	Bushing, 5/16"	1
⑲	Hex lock nut, 1/2" - 13	1
⑳	Bushing, 7/16"	1
㉑	Hex lock nut, 1/2" - 13	1

Wedge-stop rod kit (KIT-ROD-1108)

Item	Description	Quan.
③	Cotter pin, 3/16" x 1"	1
④	Wedge-stop rod	1
⑤	Flat washer, 5/8" I.D.	2
⑥	Wedge-stop rod spring	1
⑦	Wedge-stop rod nut	1

Pull handle kit (KIT-PUL-5092)

Item	Description	Quan.
①	Leaf spring	1
②	Self tapping screw	2
⑬	Pull handle	1
⑭	Cotter pin, 3/16" x 1"	1
⑰	Flat washer, 1/2" I.D.	1

Timer kit (KIT-TMR-134L or R)

Item	Description	Quan.
⑫	Timer	1
⑱	Bushing 5/16"	1
⑲	Hex lock nut, 1/2" - 13	1
㉑	Bushing 7/16"	1

Rebuild

Part number: KIT-RX-5092L

Major rebuild kit for left side (driver) handle release H5092 and X5092 top plates.

Kit does not include bracket pins, bushings.



- Multiple kits combined in one saves you money
- Parts are arranged in the sequence you need them
- Complete instructions and link to video to make rebuild easy
- Reduce inventory
- Keep all the benefits of No-Slack® technology

Replace



H7 Heavy Duty
SLTPLH7 (Driver side release)

- Excellent replacement for H5092 and X5092 fifth wheel top plates
- Mounts on existing H5092/X5092 slides and brackets
- 70,000 lbs vertical load
- 150,000 to 200,00 lbs drawbar pull
- Improved No-Slack® locking mechanism

Bumper kit (KIT-BPR-5092L or R)

Item	Description	Quan.
⑪	Wedge	1
⑮	Bumper spring	1
⑱	Bushing, 5/16"	1
㉑	Bumper	1
⑲	Hex lock nut, 1/2" - 13	1
⑳	Bushing, 7/16"	1
㉑	Flat washer, 1/2" I.D.	1
㉑	Hex head bolt, 1/2" - 13	1

Operating handle kit (OPR-5000SL or SR)

Item	Description	Quan.
⑱	Hex head bolt, 1/2" - 13	1
⑱	Bushing 5/16"	1
⑲	Flat washer, 1/2" I.D.	1
⑲	Hex lock nut, 1/2" - 13	1
㉑	Operating handle	1
⑲	Hex lock nut, 1/2" - 13	1
⑲	Bushing 7/16"	1
⑲	Flat washer, 1/2" I.D.	1
㉑	Hex head bolt, 1/2" - 13	1

No-Slack® Top Plate Kits

H5092/X5092 series

Repair

Repair kit (KIT-RPR-5092L or R)



Item	Qty.
Step jaw	1
Jaw and wedge spring	2
Cotter pin, 1/4" x 3"	2
Wedge	1
Bumper spring	1
Bushing, 5/16"	1
Hex lock nut, 1/2" - 13	1
Bushing, 7/16"	1
Hex lock nut, 1/2" - 13	1

Pull handle kit (KIT-PUL-5092)



Item	Qty.
Leaf spring	1
Self tapping screw	2
Pull handle	1
Cotter pin, 3/16" x 1"	1
Flat washer, 1/2" I.D.	1

Bumper kit (KIT-BPR-5092L or R)



Item	Qty.
Wedge	1
Bumper spring	1
Bushing, 5/16"	1
Bumper	1
Hex lock nut, 1/2" - 13	1
Bushing, 7/16"	1
Flat washer, 1/2" I.D.	1
Hex head bolt, 1/2" - 13	1

Wedge-stop rod kit (KIT-ROD-1108)



Item	Qty.
Wedge-stop rod nut	1
Flat washer, 5/8" I.D.	2
Wedge-stop rod spring	1
Wedge-stop rod	1
Cotter pin, 3/16" x 1"	1

Timer kit (KIT-TMR-134L or R)



Item	Qty.
Timer	1
Bushing 5/16"	1
Hex lock nut, 1/2" - 13	1
Bushing 7/16"	1

Operating handle kit (OPR-5000SL or SR)



Description	Qty.
Hex head bolt, 1/2" - 13	1
Bushing 5/16"	1
Flat washer, 1/2" I.D.	1
Hex lock nut, 1/2" - 13	1
Operating handle	1
Hex lock nut, 1/2" - 13	1
Bushing 7/16"	1
Flat washer, 1/2" I.D.	1
Hex head bolt, 1/2" - 13	1



Pin and Bushing Kits

Bracket Pin and Bushing Kits

Bracket pin kit (KIT-PIN-LLB)



Item	Qty.
2-piece bushing	2 Pairs
Bracket pin	2
Bracket retainer pin	2
Cotter pin	2
Bracket liner	2

Bracket pin kit (KIT-PIN-191)



Item	Qty.
1-piece bushing	2
Bracket pin	2
Bracket retainer pin	2
Cotter pin	2

Bracket pin kit (KIT-PIN-UNT)



Item	Qty.
1-piece bushing	2
Bracket pin	2
Bracket retainer pin	2
Cotter pin	2
Bracket Liner	2

Bracket pin kit (KIT-PIN-3000)



Item	Qty.
Bracket liners	2
1-piece bushing	2
Bracket pin	2
Bracket retainer pin	2
Cotter pin	2

Bushing Kits

Bushing kit (BSH-LLB)



Item	Qty.
2-piece bushing	2 Pairs
Bracket liner	2

Bushing kit (BSH-150)



Item	Qty.
1-piece bushing	2

Bushing kit (BSH-3000)



Item	Qty.
1-piece bushing	2
Bracket liners	2

Bracket Pin and Bushing Kit Guide

Top Plate Mount	Top Plate	Bracket Pin Kit	Bushing Kit
Sliding Brackets			
ATB	6000, 7000, 7000CC	KIT-PIN-LLB	BSH-LLB
AWB	7000, H5092, H7	KIT-PIN-191	BSH-150
AWB Blocked BLAWB	7000, H5092, H7	KIT-PIN-191	BSH-150
AWX	H5092, H7	KIT-PIN-XHD	BSH-150
LWB	6000, 7000, 7000CC	KIT-PIN-LLB	BSH-LLB
LWO	NT, 3000	KIT-PIN-UNT*	BSH-3000
MTB	6000, 7000, 7000CC	KIT-PIN-LLB	BSH-LLB
MWS	H5092, H7	KIT-PIN-191	BSH-150
NWB	6000	KIT-PIN-LLB	BSH-LLB
XPSA	X5092	KIT-PIN-XHD	BSH-150
ASB	NT, 3000	KIT-PIN-3000	BSH-3000

Top Plate Mount	Top Plate	Bracket Pin Kit	Bushing Kit
Fixed Mount/Plate Mount			
APB	NT, 3000	KIT-PIN-UNT*	BSH-3000
BSL	6000, 7000, 7000CC	KIT-PIN-LLB	BSH-LLB
BSM	6000, 7000, 7000CC	KIT-PIN-LLB	BSH-LLB
FMA	6000, 7000, 7000CC	KIT-PIN-191	BSH-150
FMA D3	6000, 7000, 7000CC	KIT-PIN-191	BSH-150
PMA	6000, 7000, 7000CC	KIT-PIN-LLB	BSH-LLB
PML	6000, 7000, 7000CC	KIT-PIN-LLB	BSH-LLB
PSA	H5092, H7	KIT-PIN-191	BSH-150
PS5	H5092, H7	KIT-PIN-191	BSH-150
PS5 Blocked (BLPS5)	H5092, H7	KIT-PIN-191	BSH-150
SMB	NT, 3000	KIT-PIN-UNT*	BSH-3000
XPSA	X5092	KIT-PIN-XHD	BSH-150

*If 3000 Series top plate on the bracket or slide, use KIT-PIN-3000.