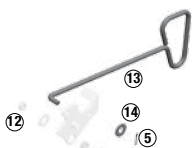


Pull Handle Kit for:

6000 (SLTPL6000), 7000 (SLTPL7000),
7000 Clean Connect (SLTPL7000CC),
H7 (SLTPLH7), NT (SLTPLUNT)



Repair

Designed for all No-Slack® Models
except Heavy Duty H7

Pull handle kit (KIT-PUL-6000L or R)

⑬	Pull handle	1
⑭	Flat washer, 1/2" I.D.	1
⑤	Cotter pin, 3/16" x 1"	1



Available for driver (L) or passenger side (R) models

Designed for Heavy Duty No-Slack® H7

Pull handle kit (KITPULH7)

⑬	Heavy Duty Pull Handle	1
⑫	Hex lock nut, 1/2" - 13	1

