

No-Slack® Top Plate Kits

No-Slack® NT/6000/7000/7000CC

Repair

Repair kit (KIT-RPR-6000L or R)

Item	Description	Qty.
⑥	Bumper spring	1
⑦	Handle spring	1
③⑦	Timer spring	1
②①	Step jaw	1
②②	Wedge	1
⑩	Bushing, 7/16"	1
⑮	Bushing, 5/16"	1
⑰	Bushing, 1 1/4"	1
⑫	Hex lock nut, 1/2" - 13	3

Spring kit (KIT-SPRING)

⑥	Bumper spring	1
⑦	Handle spring	1
⑰	Timer spring	1

Wedge-stop rod kit (KIT-ROD-1108)

①	Wedge-stop rod nut	1
②	Flat washer, 5/8" I.D.	2
③	Wedge-stop rod spring	1
④	Wedge-stop rod	1
⑤	Cotter pin, 3/16" x 1"	1

Secondary lock kit (KIT-LAT-6000L or R)

⑦	Handle spring	1
⑧	Hex head bolt, 1/2" - 13	1
⑨	Flat washer, 1/2" I.D.	2
⑩	Bushing, 7/16"	1
⑪	Secondary lock	1
⑫	Hex lock nut, 1/2" - 13	1
⑤	Cotter pin, 3/16" x 1"	1

Pull handle kit (KIT-PUL-6000L or R)

⑬	Pull handle	1
⑭	Flat washer, 1/2" I.D.	1
⑤	Cotter pin, 3/16" x 1"	1

Bumper kit (KIT-BPR-6000L or R)

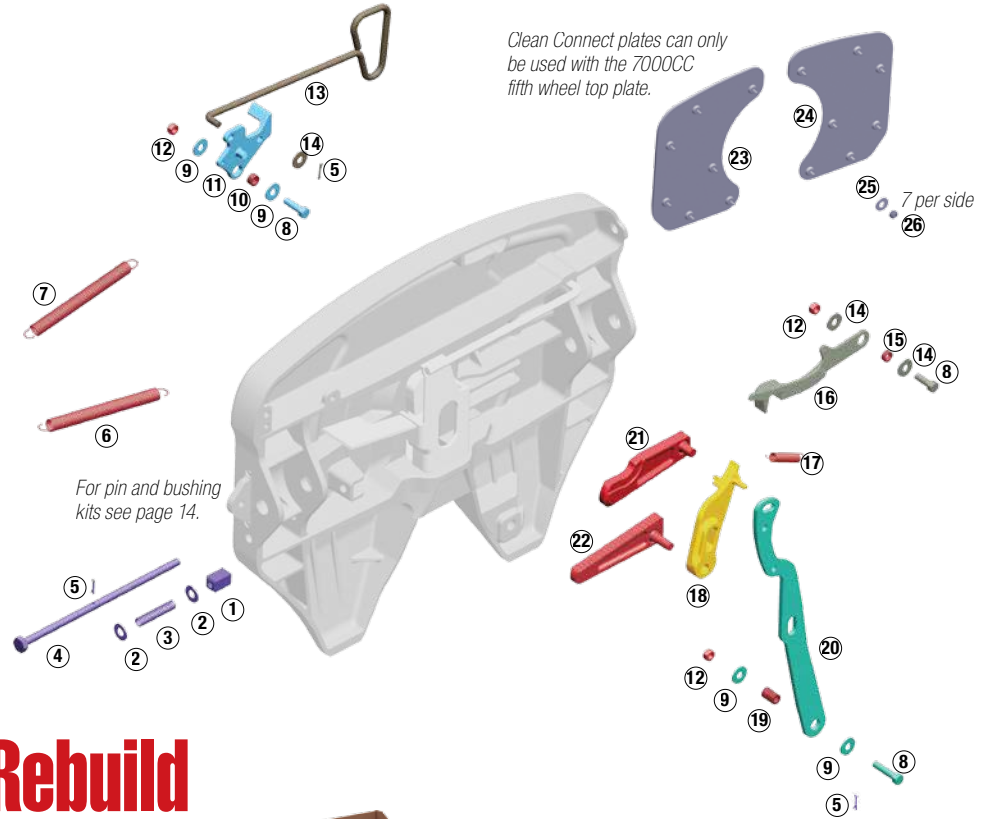
⑫	Hex lock nut, 1/2" - 13	1
⑭	Flat washer, 1/2" I.D.	2
⑮	Bushing	1
⑧	Hex head bolt, 1/2" - 13	1
⑯	Bumper	1
⑥	Bumper spring	1

Timer kit (KIT-TMR-6000L or R)

⑰	Timer spring	1
⑱	Timer	1
⑫	Hex lock nut, 1/2" - 13	1
⑤	Hair pin cotter	1

Operating handle kit (KIT-OPR-6000)

⑩	Bushing, 7/16"	1
⑮	Bushing, 5/16"	1
⑰	Bushing, 1 1/4"	1
⑫	Hex lock nut, 1/2" - 13	3
⑨	Flat washer, 1/2" I.D.	2
⑧	Hex head bolt, 1/2" - 13	1
⑳	Operating handle	1
⑤	Hair pin cotter	1



Rebuild

Part number: KIT-RX-67NTL

Major rebuild kit for left side (driver) handle release NT/6000/ 7000/ 7000CC.

Kit does not include bracket pins, bushings or Clean Connect plate kits.

- 7 kits shown at left combined in 1 saves you time and money
- Parts are arranged in the sequence for easy installation
- Complete instructions and link to video
- Reduce inventory
- Keep all the benefits of No-Slack® technology



7000CC Options

Clean Connect plate kits (7000CC)

Item	Description	Qty.
(CCR-PLATES-R)		
⑳	Right CC plate	1
㉕	Flat washer	7
㉖	Hex lock nut	7
(CCR-PLATES-L)		
㉔	Left CC plate	1
㉕	Flat washer	7
㉖	Hex lock nut	7

Replace

Replace or upgrade your fifth wheel top plate.

7000
SLTPL7000 (Driver side release)
SRTPL7000 (Passenger side)
AATPL7000 (Air Actuated)

6000
SLTPL6000 (Driver side release)
SRTPL6000 (Passenger side)

7000CC (Clean Connect)
SLTPL7000CC (Driver side release)
AATPL7000CC (Air Actuated)

NT*
SLTPLUNT (Driver side release)
SRTPLUNT (Passenger side)
**Replaces NT and 3000 models only.*

For ratings see page 4.

For pin and bushing kits see pages 14.