

TECHNICAL BULLETIN

• TB-049 • Rev.0

Serial Number Location and Information

The following illustrations show product serial number information for Fontaine® fifth wheels.

New style serial number location (after 11/27/00)

Serial number engraved directly into the right side of fifth wheel skirt.



Figure 1: New style (after 11/27/2000) serial number location

3000 series serial number location

Serial number engraved directly into the left side of fifth wheel skirt.

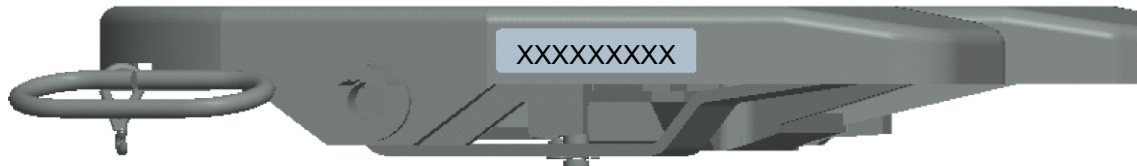


Figure 2: 3000 series serial number location

Old style serial number location (before 11/27/00)

Serial number located on small rectangular tag on front of top plate.

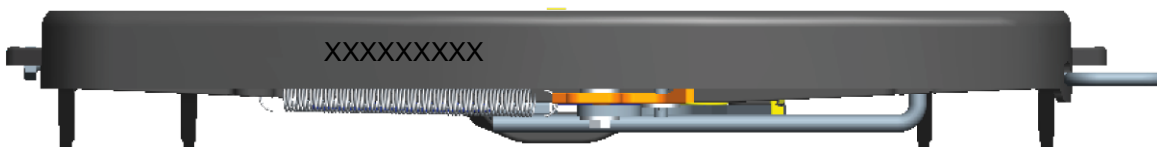


Figure 3: Old style (before 11/27/2000) serial number location

TECHNICAL BULLETIN

• TB-049 • Rev.0

Reading a Fontaine Fifth Wheel (new style) serial number

Fontaine serial numbers are comprised of 9 numeric digits.

- The first digit (XXXXXXXXX) indicates the plant in which the product was assembled.
- The second, third and fourth digits (XXXXXXXXX) indicate the Julian date (day of the year) the product was produced.
- The fifth and sixth digits (XXXXXXXXX) indicate the year.
- The seventh, eighth, and ninth digits (XXXXXXXXX) indicate the sequence of the fifth wheel in the quantity produced in a given day.

For example, the following serial number indicates the wheel was the first wheel assembled in plant 1 on the first day of the year 2011.

<u>Plant</u>	<u>Julian date</u>	<u>Year</u>	<u>Sequence</u>
1	001	11	001

If you have any questions about Fontaine's serial numbers, please contact Fontaine Fifth Wheel at 800.874.9780.