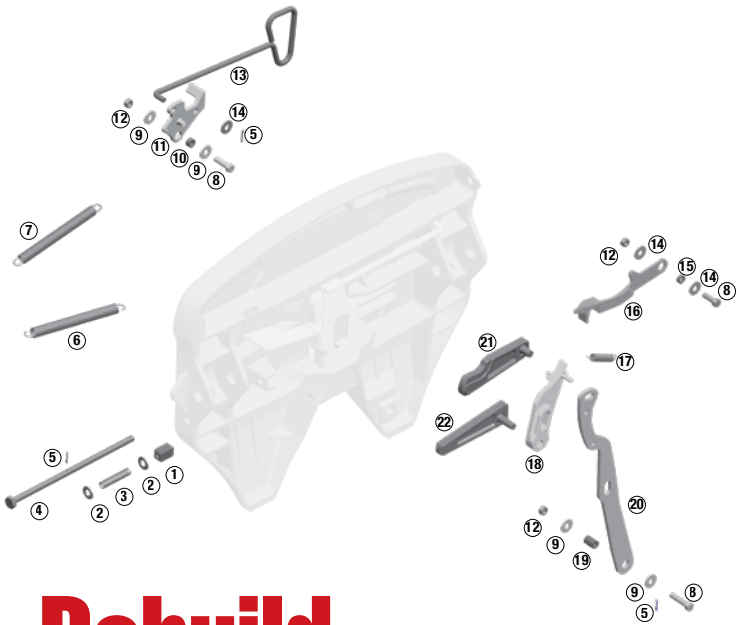


# Rebuild Kit for:

6000 (SLTPL6000), 7000 (SLTPL7000),  
7000 Clean Connect (SLTPL7000CC),  
NT (SLTPLUNT)



## Rebuild

**Part number:  
KIT-RX-67NTL**

*Major rebuild kit for left  
side (driver) handle release  
NT/6000/7000/  
7000CC.*

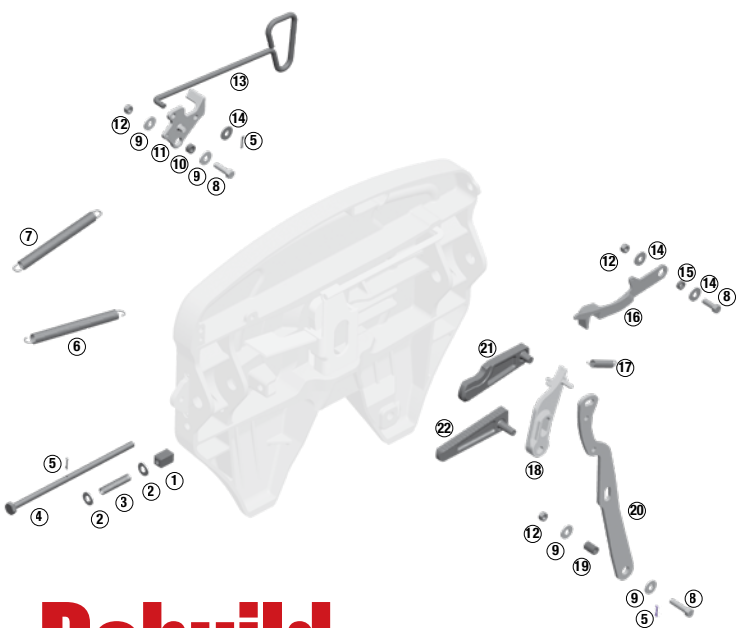
*Kit does not include  
bracket pins, bushings or  
Clean Connect plate kits.*



- All repair kits combined into one to save you time and money ... includes all numbered parts above
- Parts are arranged in the sequence for easy installation
- Complete instructions and link to video
- Reduce inventory
- Keep all the benefits of No-Slack® technology

# Rebuild Kit for:

6000 (SRTPL6000), 7000 (SRTPL7000),  
7000 Clean Connect (SRTPL7000CC)



## Rebuild

**Part number:  
KIT-RX-67NTR**

*Major rebuild kit for right side (passenger) handle release NT/6000/7000/7000CC.*

*Kit does not include bracket pins, bushings or Clean Connect plate kits.*



- All repair kits combined into one to save you time and money ... includes all numbered parts above
- Parts are arranged in the sequence for easy installation
- Complete instructions and link to video
- Reduce inventory
- Keep all the benefits of No-Slack® technology